

CORPORATE PROFILE

2024



Conselect Consulting Engineers

**Consulting Engineers
&
Project Managers**

TABLE OF CONTENTS

General Overview:.....	4
Mission, Vision, Values & Slogan :.....	5
Ownership, Skills Transfer and Training:	6
Corporate Social Responsibility:	7
Quality Policy & Project Approach:	9
Objective of Profile:.....	10
Service Overview:	10
Electrical Consulting Engineering:.....	11
IT, Communications & Electronic Consulting Engineering:.....	12
Mechanical Consulting Engineering:.....	13
Civil/Structural Consulting Engineering:	14
Surveying:	15
Customer Profile:.....	16
Competitive Advantage:	16
Technology Capabilities:.....	16
Company Details & Resources:	17
Engineering Team, Associated Firms & Freelance Engineers :.....	18
Skills Transfer/Training:.....	19
Bursaries:	19
Completed & Current Projects:.....	20
Services (roads, water, sewer, storm water and electricity):.....	20
IT, Communications & Electronic Consulting Engineering:.....	23
Building Services:.....	24
Surveying:.....	26

CONSELECT OFFICES

ONGWEDIVA OFFICE

Conselect Consulting Engineers
Erf 3265
Libertine Amathila Street
Ongwediva
Namibia
Tel: +264 65 230 771
Mobile: +264 811 280 260



WALVIS BAY OFFICE

Conselect Consulting Engineers
Erf 5575
Pumla Court, Unit 5
Cnr. Makalani Crescent & Ebony Street
Independence Beach
Walvis Bay, Namibia
Tel: +264 64 200 336
Mobile: +264 811 280 260



Company Reg. No: CC/2023/07689

VAT Reg. No: 14239775-01-5

Postal Address: P.O. Box 5076, Walvis Bay, Namibia

Email: wiseman@conselect.com.na / info@conselect.com.na / wisemanmolatzi74@gmail.com

Website: www.conselect.com.na

GENERAL OVERVIEW



FIGURE 1: OKANGWATI POLICE STATION

Conselect Engineering was established in 2003 as a CC, converted into a (Pty) Ltd in 2016, and in 2023 it was renamed to Conselect Consulting Engineers CC. It is registered with BIPA as per the Companies Act, NamRA and with the SSC as per the Social Security Act.

Conselect Consulting Engineers is a multi-disciplinary consulting engineering firm and is a member of the Association of Consulting Engineers of Namibia (ACEN).

The firm's Head office is situated at Erf 5575, Pumla Court, Unit 5, Cnr. Makalani Crescent & Ebony Street, Independence Beach, Walvis Bay, Namibia.

The offices are fully resourced to enable the handling of the consulting engineering services provided by the firm.

Conselect Consulting Engineers is headed by Mr. Wiseman Molatzi, the company's Managing Director who is an Electrical Engineer by profession. Wiseman has more than 25 years of extensive experience in the electricity supply industry at executive/ strategic management and operational levels respectively. He is a Registered Electrical Engineer with the Engineering Council of Namibia and a Corporate Member of the Engineering Professions Association of Namibia.

The Company is further through associated firms equipped with additional professionals; these being: Electrical Engineers, Mechanical Engineers, Civil/ Structural Engineers and Engineering Technicians respectively. All these Engineers and Technicians are highly qualified, experienced and have vast exposure in the various engineering industries.

Up until the end of 2019, Conselect had a staff compliment of 16 employees (consisting of 6 Engineers, 4 Engineering Technicians, 1 Surveyor and Administrative staff. As a result of the global economic downturn which had affected our Country's economic activities negatively; Conselect, like many other consulting engineering firms in Namibia, was left with no other option but to lay off most of its workforce as the firm had no tangible projects in the Country that could sustain it's overheads for much longer, the biggest portion of the overheads being staff salaries and wages. It is therefore from this background that Conselect then decided to bring on board associated firms which it had a long and strong working relationship to collaborate with, for the purpose of uninterrupted continuation of the provision of consulting engineering services to Conselect's current and future customers.

MISSION, VISION, VALUES & SLOGAN



TEAM BUILDING: 2016

Vision Statement

- To be the preferred multi-disciplinary consulting engineering service provider, always striving to be first choice and associated with perfection at all times.

Mission Statement

Ensuring innovative and sustainable engineering solutions, exceptional customer satisfaction while maintaining employee growth, and expanding shareholders' interests by rendering services of a highly professional nature, considering the environment, natural resources and technology.

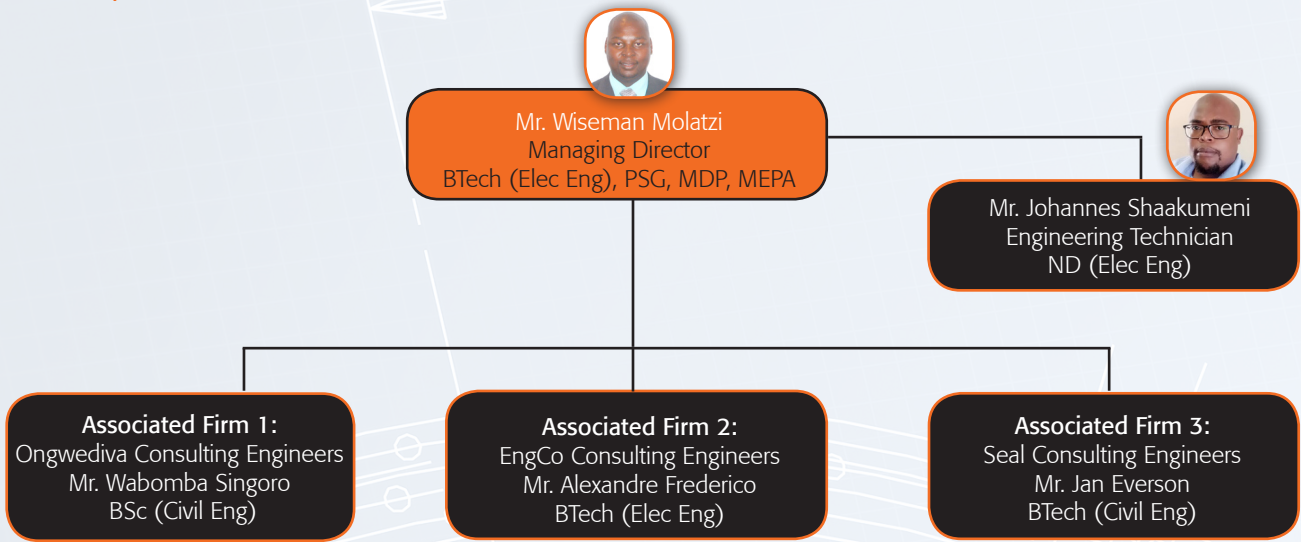
Values

Integrity
Fairness
Excellence
Transparency
Innovative
Accountability
Professionalism
Social responsibility
Loyalty

Slogan

Engineering the future today

OWNERSHIP, SKILLS TRANSFER AND TRAINING



Conselect Company Organogram

Conselect Consulting Engineers is 100% Namibian owned and controlled/managed. The firm's principals are 100% from previously disadvantaged groups.

Control of Conselect is vested in the management and shared by registered engineers who are independent of external interests. A high standard of time and cost management and quality control is maintained, ensuring that projects are produced on time, within budget and to the highest standard.

Conselect has standing commitment to the objectives of Namibia's National Development Programme, and a history of providing empowerment and assistance to underprivileged communities. The Firm provides extensive support for educational advancement in the form of student and sport sponsorship and in-service training, and supports various initiatives within the community.

Conselect is engaged with Job Attachment by giving on-the-job-training to the various Engineering Students studying at Tertiary Institutions both local and abroad.

The company also gives study assistance/bursaries to Namibians wishing to follow a career in any of the Multi-Disciplinary Engineering fields; being:- Electrical, Mechanical, Civil & Structural. Conselect Engineering is also engaged with sponsorship of various organisations/institutions.

The firm is also committed to meeting the needs of the country through job creation, training and the development of skills; and it is always ready and willing to extend this commitment to other parts of the African continent. The company's objective is to assist with the alleviation of the socio-economic backlog and develop human resources while attracting investments.

CORPORATE SOCIAL RESPONSIBILITY

Conselect continuously seeks to make an effective professional contribution to raising the quality of life in all sections of community.

We believe that encouraging innovative thinking, imagination and vision among aspirant professionals will ensure the future of the firm and its staff and will benefit the communities we serve.

Details of corporate social responsibility contribution made by Conselect are as follows:



SPONSORSHIP TOWARDS THE DEC 2013/14 FESTIVE SEASON POLICE ROAD BLOCKS IN THE ERONGO REGION

- Sponsorship towards the **Electricity Control Board (ECB)** Year End Function, 2011 (**N\$5,750.00**).
- Sponsorship towards the **Association of Municipal Electricity Undertakings (AMEU)** Namibia Branch event, 2012 (**N\$ 41,660.00**).
- Sponsorship towards **NCCI** Business Information Sharing Meeting about VAT, Income Tax, and other related services at Ongwediva Trade Fair, 2012 (**N\$ 4,000.00**).
- Sponsorship towards the **Ondangwa Trade & Industrial Exhibition Gala Dinner** at Ondangwa, 2012 (**N\$ 10,000.00**).
- Sponsorship towards the **Careers Expo Namibia 2012**, held at Windhoek Country Club & Resort, 2012 (**N\$ 7,800.00**).
- Sponsorship towards **Ministry of Education, Directorate of Education**, Ohangwena Circuit Prize Giving Ceremony, held at Etameko Combined School, 2012 (**N\$ 5,000.00**).
- Sponsorship for **TADAH** program (a program which focus on helping leaners and empower them to deal with issues related to teenagers with alcohol abuse, drugs and HIV/AIDS) at Academia High School, Windhoek, 2012 (**N\$ 3,500.00**).
- Birthday Pledge for His Excellency, Dr Hifikepunye Pohamba, President of the Republic of Namibia, 2012 (**N\$ 5,000.00**).
- Sponsorship towards **NCCI** Northern Branch Annual Gala Dinner at Ongwediva Trade Fair, 2012 (**N\$ 6,500.00**).
- Sponsorship towards **Tura Magic Football Club**, 2012 Namibia Premier League, 2012 (**N\$ 5,000.00**).
- Sponsorship towards the Official Launch of **Vision 2030 Focus Magazine**, 2012 (**N\$10,000.00**).
- Sponsorship towards the **Ondangwa Town Council** Clean-up Campaign at Ondangwa, 2012 (**N\$ 5,000.00**).
- Stationary Donation for **Kambowo Primary School** in Rundu, Rundu East, Okavango Region, 2012 (**N\$ 2,500.00**).
- Sponsorship towards the **SWAPO PARTY** Congress, 2012 (**N\$15,000.00**).
- Sponsorship towards the **Omuthiya Town Council** 1st Senior Citizen Christmas Party, 2012 (**N\$ 2,000.00**).
- Sponsorship towards the **Association of Municipal Electricity Undertakings (AMEU)** Namibia Branch event, 2013 (**N\$ 27,560.00**).
- Sponsorship towards the **Ondangwa Trade & Industrial Exhibition** Fundraising Gala Dinner at Ondangwa, 2013 (**N\$11,000.00**).

- Sponsorship towards the **Ondangwa Town Council Sport Club**, 2013 (N\$ 5,000.00).
- Sponsorship towards **Tura Magic Football Club**, Namibia Premier League, 2013 (N\$20,000.00).
- Sponsorship towards the **2nd Commemoration of the 12th May Movement** linked to the birthday of the Founding Father of the Namibian Nation (His Excellency Dr. Sam Nujoma), 2013 (N\$ 5,000.00).
- Sponsorship towards the **Rhenisch Church** in Namibia for Debutant Gala Event, Walvis Bay, 2013 (N\$ 14,200.00).
- Sponsorship towards the **National Agenda Production** Launch, 2013 (N\$10,000.00).
- Sponsorship towards **NBC** for Live Coverage of the soccer match between Namibia vs. Nigeria, 2013 (N\$10,000.00).
- Sponsorship towards the **Erongo Rugby Academy**, 2013 (N\$20,000.00).
- Sponsorship towards **NBC** for the Live Coverage of the Boxing match between Harry Simon (Namibia) vs. Geard Ajetovic (Serbia), 2013 (N\$10,000.00).
- Donation towards the **SWAPO Party** Walvis Bay District braai, 2013 (N\$10,000.00).
- Sponsorship towards **Kleine Kuppe Private School**, 2013 (N\$2,000.00).
- Donation towards the **National Youth Council of Namibia (NYC)**, Oshana Regional Youth Forum, 2013 (N\$5,000.00).
- Sponsorship towards the **Erongo Regional Council** for the Dinner hosted in honour of the Chinese Business Delegation in Walvis Bay, 2014 (N\$ 8,000.00).
- Sponsorship towards the **Erongo Rugby Academy**, 2014 (N\$ 2,500.00).
- Sponsorship towards the **Swapo Party** birthday celebration in Walvis Bay, 2014 (N\$ 10,000.00).
- Sponsorship towards the **Karibib Town Council** Fundraising Gala Dinner in Karibib, 2014 (N\$ 20,000.00).
- Sponsorship towards the **Ondangwa Town Council** Fundraising Gala Dinner in Ondangwa, 2014 (N\$ 25,000.00).
- Sponsorship towards the **Oshakati Town Council** Fundraising Gala Dinner in Oshakati, 2014 (N\$ 15,000.00).
- Sponsorship towards the **Swapo Party** Election Campaign, 2014 (N\$ 40,000.00).
- Sponsorship towards **Karibib Town Council** fundraising Gala Dinner, 2014 (N\$ 10,000.00).
- Sponsorship towards **Usakos Town Council** fund-raising Gala Dinner, 2014 (N\$ 5,000.00).
- Sponsorship towards **Omaruru Municipality** fundraising Gala Dinner, 2014 (N\$ 5,000.00).
- Sponsorship towards **Eenhana Town Council** fundraising Gala Dinner, 2014 (N\$ 5,000.00).
- Sponsorship towards **Walvis Bay Municipality** fundraising Gala Dinner, 2014 (N\$ 60,000.00).
- Sponsorship towards **Windhoek Technical High School Rugby Team**, 2014 (N\$ 8,000.00).
- Sponsorship towards **Tura Magic Football Club**, 2014 Namibia Premier League, 2014 (N\$ 120,000.00).
- Sponsorship towards **Aranos Town Council Social Club; Henties Bay Municipality Social Club; Karibib Town Council Fundraising Gala Dinner; Ondangwa Town Council Fundraising Gala Dinner; Oshakati TOTEM EXPO Fundraising Gala Dinner; Namibia Schools Sports Union; Okakarara Trade Fair Gala Dinner; SWAPO PARTY - Okakarara District; Erongo Rugby Academy; Okakarara Trade Fair Society; Tura Magic Football Club; Erongo Regional Council – Walvis Bay Urban Constituency**, 2015 & 2016 (N\$ 685,000.00).
- Sponsorship towards **Tura Magic Football Club, Namibia Premier League, Aranos Town Council; Social Club; Karibib Town Council Fundraising Gala; Dinner; Ondangwa Town Council Fundraising Gala Dinner; Oshakati TOTEM EXPO Fundraising Gala Dinner; Outjo Tourism & Trade EXPO fundraising gala dinner; Eenhana fundraising gala dinner; Counciller Skini; Sports day; Erongo SWAPO Youth League, Erongo Rugby Academy; Nkurenkuru Town Council Fundraising Gala dinner; Usakos Town Council (Mayor's Office); Namibia Karate Union; Erongo Region Fundraising Gala dinner; The Association of Electricity Distribution Undertakings in Namibia (AEDU)**, 2017 (N\$ 332,000.00).
- Sponsorship towards **Usakos Town Council** office furniture, 2023 (N\$ 38,000.00).

TOTAL: N\$ 1,681,000.00

QUALITY POLICY & PROJECT APPROACH



FIGURE 2: OKANGWATI POLICE STATION ENTRANCE VIEW

The Quality Policy of Conselect is a commitment to acquire and execute consulting services related to electrical and mechanical, civil and structural engineering projects in accordance with accepted standards of engineering practice.

Client satisfaction as well as professional fulfillment is the by-product of this process, whilst excellence will be strived for within the limitations of financial and time constraints. The achievement of this Quality Policy and the consistent maintenance of the associated high level of service require a structured and disciplined approach by all staff in the various activities forming part of the services in accordance with the principles of Quality Assurance. The Management of Conselect aims to ensure that this policy is understood, implemented and maintained at all levels in the organization.

The project implementation procedure covers the review, checking, verification and validation of the design inputs and output, including design calculations and drawings, for conformance with the design standards and client requirements.



FIGURE 3: KAMDESCHA SOLAR/HYBRID POWER PLANT

The main objective of this profile is to give you an insight as to who we really are and also to request you to make use of our professional and reliable multi-disciplinary consulting engineering and project management services.

Service Overview:

We specialize in consulting and project management services in all the various multi-disciplinary consulting engineering fields, as well as surveying.

These services include:

Electrical, Mechanical, Civil and Structural Consulting Engineering as well as Surveying Engineering.



FIGURE 4: NATIONAL BOTANICAL RESEARCH INSTITUTE

- Electricity distribution system (electrification / electrical reticulation):
 - o Design, Specifications, Bill of Quantities
 - o Tender preparation & evaluation
 - o Construction Supervision & Commissioning
- Building Services (electrical):
 - o Design, Specifications, Bill of Quantities
 - o Tender preparation & evaluation
 - o Construction Supervision & Commissioning
- Power Factor Correction
- Loadflow Studies
- Energy Management:
 - o Power System Data Logging & Analysis
 - o Energy Audit & Energy Efficiency measures
 - o Electricity Saving measures
- Electrical Infrastructure / Network Audit & Meter Audit
- Metering (including statistical metering)
- Traffic Lights (robots)
- Street Lighting & Area Lighting
- Renewable Energy (Solar, Wind, etc.)
- Backup / Standby Generators

Access control, CCTV, Fire detection systems, Building Energy management systems (BEMS)

- Design, Specifications, Bill of Quantities
- Tender preparation & evaluation
- Construction Supervision & Commissioning

IT infrastructure, Fibre networks, LAN networks

- Design, Specifications, Bill of Quantities
- Tender preparation & evaluation
- Construction Supervision & Commissioning



FIGURE 5: NATIONAL BOTANICAL RESEARCH INSTITUTE COURTYARD VIEW

- Building Services (mechanical):

Design, Specifications, Bill of Quantities, Tender preparation & evaluation, Construction Supervision & Commissioning of the following mechanical engineering services:

- Heating, Ventilation & Air-Conditioning (HVAC) systems
- Fire Detection & Fire Protection systems
- Wet Services (cold & hot water supply and drainage systems)
- Boiler & Steam distribution systems
- Medical gases and Medical equipment

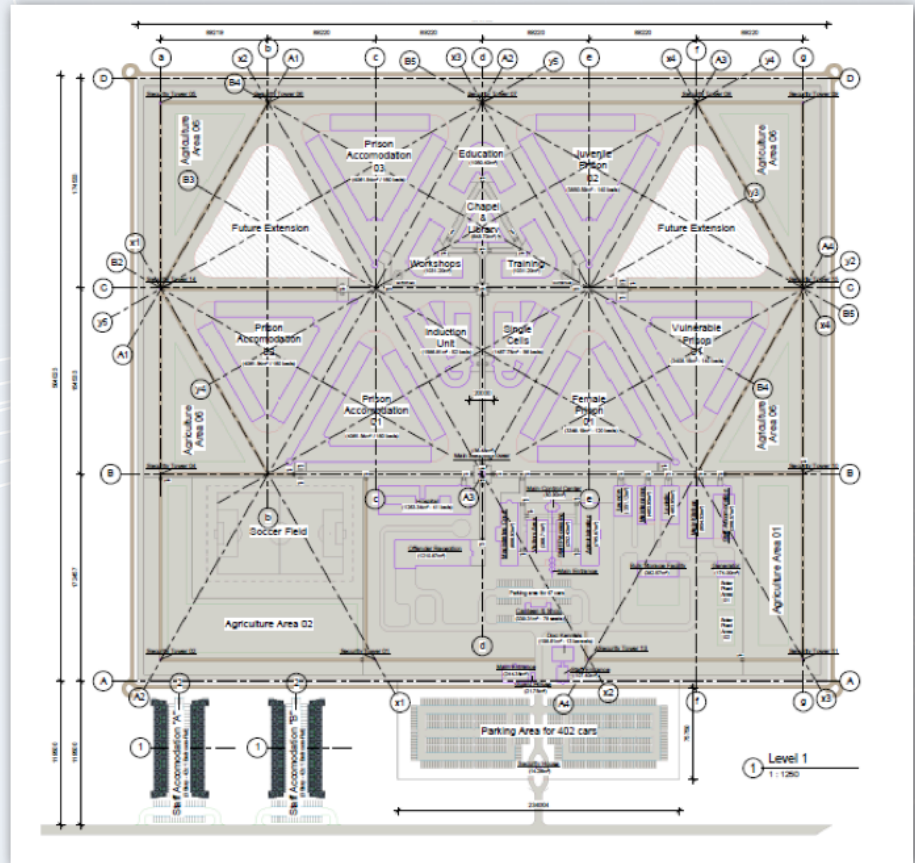


FIGURE 6: OLUNO REMAND PRISON

Design, Specifications, Bill of Quantities, Tender preparation & Evaluation, Construction Supervision and field investigation including Commissioning of the civil/ structural engineering services:-

- Buildings & Structures Engineering - Typical project elements in this category are buildings, culverts, bridges structures, elevated tanks and water reservoirs. Designs are deemed to be;
 - Functional to suit client needs, i.e. facilities will intently serve their purpose
 - Structurally stable and durable
 - Constructible and economical
- Water supply & sewer reticulation, arterial roads and storm water drainage services for rural and urban development projects to include data collection, analysis and processing; pavement and geometric considerations;
- Waste water transfer and treatment include field surveys of target communities; data collection and processing.
- Highway include feasibility studies, geometric & pavement considerations;
- Bridge engineering including hydraulic and flood studies;
- Dam Engineering including appraisal, feasibility studies and site investigation;

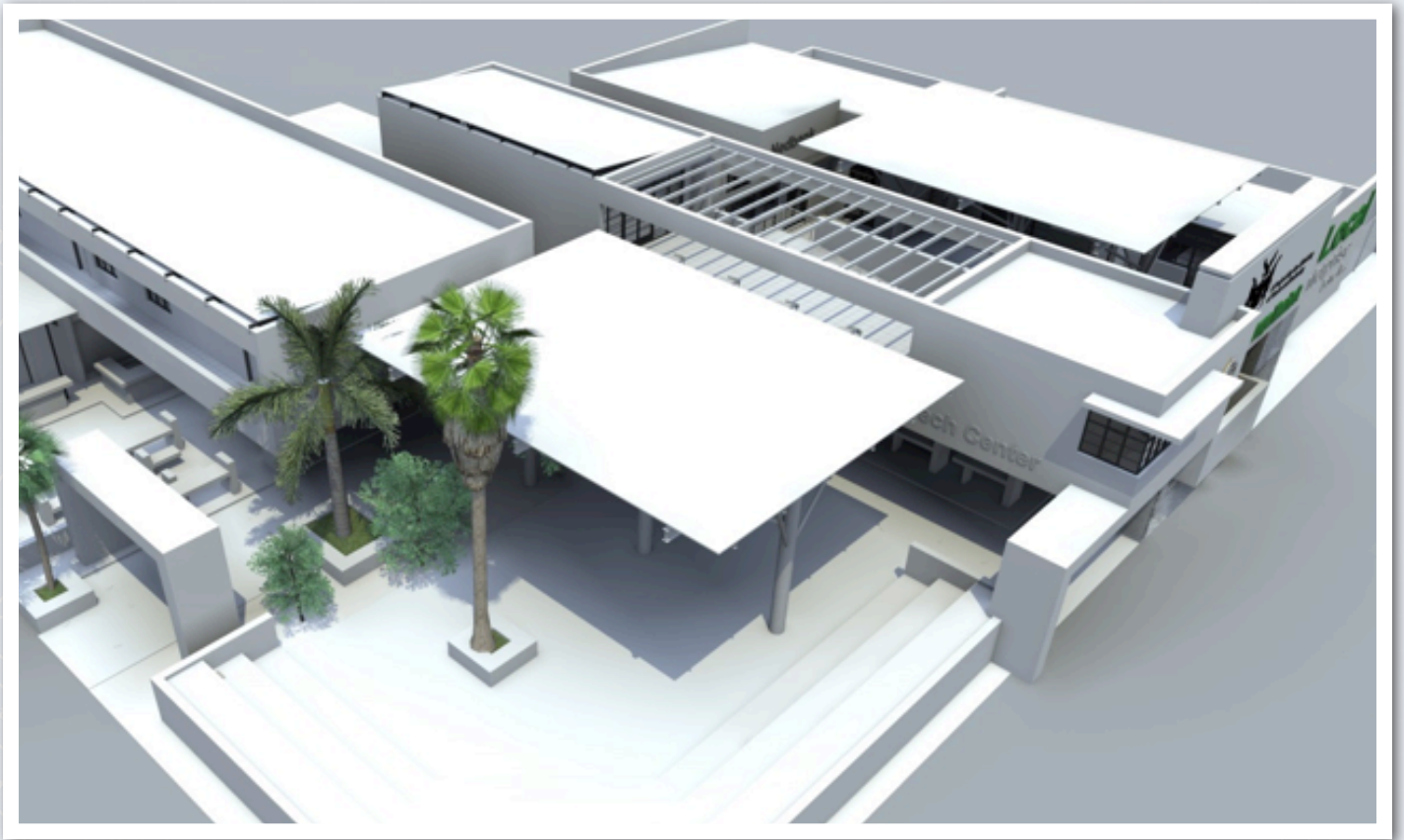


FIGURE 7: ONAYENA COMMUNITY MARKET & BUSINESS CENTRE

Engineering Survey:

- Water reticulation
- Sewerage reticulation
- Treatment Plants
- Road works including bridges and dams
- Concrete Structures
- Highway Construction
- Building Construction



FIGURE 8: ONGENGA BUSINESS HUB

Some of our current and prospective customers in Namibia and the rest of Africa are as follows:

- Government Ministries
- Regional Councils
- Local Authorities
- State Owned Enterprises (SOEs)
- Large Power Users (private and public)
- Electricity Distributors
- Private Sector

Competitive Advantage:

We are proud to mention that this company is equipped with expertise that has been involved in all the multi-disciplinary consulting engineering industries/fields for more than a decade. The experience within this company includes among others that of electricity generation, transmission, distribution & supply; building services; roads; bridges; storm water; sewer & water reticulation.

Technology Capabilities:

All the equipment, software and hardware that we utilize in our day to day operation/service delivery adheres to and are fully in compliance with the various, applicable and relevant requirements and standards such as SABS, SANS, NRS, IEC, ISO, etc.

COMPANY DETAILS & RESOURCES

Walvis Bay Office details	Ongwediva Office details:	Associated Firms details:
<p>Conselect Consulting Engineers Att: Mr. Wiseman Molatzi Mobile: +264 811 280 260</p> <p>Erf 5575, Pumla Court, Unit 5 Cnr. Makalani Crescent & Ebony Street Independence Beach Walvis Bay, Namibia Tel: +264 64 200 336</p>	<p>Conselect Consulting Engineers Att: Mr Johannes Shaakumeni Mobile: +264 811 280 260</p> <p>Erf 3265 Libertine Amathila Street Ongwediva Namibia Tel: +264 65 230 771</p>	<p>Ongwediva Consulting Engineers Att: Mr. Wabomba Singoro Mobile: +264 811 280 260</p> <p>EngCo Consulting Engineers Att: Mr. Alexandre Frederico Mobile: +264 811 280 260</p> <p>Seal Consulting Engineers Att: Mr. Jan Everson Mobile: +264 811 280 260</p>
Professional Indemnity Insurance details:	Postal Address:	Professional Registration:
<p>The Insurer: Old Mutual Short-Term Insurance Company</p> <p>Policy Number: 678377023 Broker: Glen-Spyron Insurance Brokers Limit of Indemnity: N\$2,000,000.00 Previous/Current Claims: None</p>	<p>P.O. Box 5076 Walvis Bay, Namibia</p> <p>Company Registration: CC/2023/07689 VAT Registration: 14239775-01-5 Website: www.conselect.com.na Email: wiseman@conselect.com.na Email: wisemanmolatzi74@gmail.com</p>	<p>Association of Consulting Engineers of Namibia (ACEN)</p>
PHYSICAL FACILITIES / EQUIPMENT AND OTHER RESOURCES		
Hardware Facility / Equipment	Software and Useful Models	Survey Equipment
<ol style="list-style-type: none"> HP Laser Jet P2055 Printer HP Office Jet 7000 wide format Colour Printer HP Design Jet T790 Colour Plotter/ Printer Telephone lines plus Telephone Extensions Fax/ Copier Samsung SCX-4623 Telefax machine Digital Cameras Desktop Computers Laptops Energy Analyser (Data Logger) Differential GPS 	<ol style="list-style-type: none"> Prokon (Structural Design Software) Microsoft office suite 2012 AutoCAD 2007, 2012 (Engineering Detailing and Map) Microsoft Project 2009 for project management Civil Designer Suite (sewer, roads, water, survey) Adobe Acrobat 9.0 Quick Books Accounting Software CAD GIS 	<ol style="list-style-type: none"> TS02POWER 3" TOTAL STATION – EL GPS Dumpy Level Set 2-way radios Reflector Poles Single-Prism Holder Circular Prisms Survey Umbrella with pegs Wooden Tripod – Telescopic Aluminium Tripod

ENGINEERING TEAM

	Name	Qualification	Experience	Specialization
1	Wiseman Molatzi	BTech. (Elec. Eng.); PSG; MDP; MEPA; ECN	25	Strategic Mgt, Project Mgt, Electrical/ Mechanical Engineering Consulting
2	Johannes Shaakumeni	National Diploma (Electrical Eng.)	10	Electrical Engineering Consulting

ASSOCIATED FIRMS

	Name	Principal	Qualification	Experience	Specialization
1	Ongwediva Consulting Engineers	Wabomba Singoro	BSc (Civil Eng); ECN	35	Project Management, Civil/ Structural Engineering Consulting
2	EngCo Consulting Engineers	Alexandre Frederico	BTech (Elec Eng); ECN	20	Project Management, Electrical/ Mechanical Engineering Consulting
3	Seal Consulting Engineers	Jan Everson	BTech (Civil Eng); ECN	28	Project Management, Civil/ Structural Engineering Consulting

FREELANCE ENGINEERS

	Name	Qualification	Experience	Specialization
1	Andries Brummer	BEng. (Civil); MEng. (Civil Eng.); ECN; ECSA	39	Project Management, Civil/ Structural Engineering Consulting
2	Jaco Grobler	BTech. (Civil Eng.) ECSA; SAICE; ECN	27	Project Mgt, Civil/ Structural Engineering Consulting
3	Trevor Zhou	BSc. Hons. (Mech. Eng.); ECSA	12	Project Mgt, Mechanical Engineering Consulting

SKILLS TRANSFER/ TRAINING

	Name	Qualification	Year	Nationality
1	Elvin Kamana	BEng (Civil Engineering)	2012	Namibian
2	Paulus Shimbindja	National Diploma (Surveying)	2012	Namibian
3	Katjekua Murangi	BTech (Mechanical Engineering)	2012	Namibian
4	Mariura Muhenje	BSc Hons (Civil Engineering)	2013	Namibian
5	Oriri Rukoro	BSc Hons (Civil Engineering)	2014	Namibian
6	Johannes Shaakumeni	National Diploma (Electrical Engineering)	2014	Namibian
7	Benzen Tjiposa	National Diploma (Electrical Engineering)	2014	Namibian
8	Nathanael Anaene	National Diploma (Civil Engineering)	2015	Namibian
9	Gerson Kondo	BEng (Mechanical Engineering)	2016	Namibian
10	Ueivaza Kazohua	BTech (Electrical Engineering)	2016	Namibian

BURSARIES

	Name	Qualification	Institution/ University	Year	Nationality
1	Emilia John	BTech (Civil Engineering)	Cape Peninsula University of Technology (CPUT)	2015	Namibian
2	David Frans	BTech (Civil Engineering)	Cape Peninsula University of Technology (CPUT)	2016	Namibian
3	Timothy Saal	BEng (Mechanical Engineering)	Stellenbosch University	2017	Namibian

COMPLETED AND CURRENT PROJECTS

SERVICES (ROADS, WATER, SEWER, STORM WATER AND ELECTRICITY)

(PROJECT MANAGEMENT; DETAILED ENGINEERING DESIGN; TENDERING; ADJUDICATION & CONSTRUCTION SUPERVISION)

Completed Projects					
	Project Name	Client	Project Cost	Duration Stage Year	Discipline
1	Construction of Services in Eenhana (Roads, Water, Sewer & Electrical Reticulation)	Eenhana Town Council	N\$ 35 Million	24 Month Complete 2015	Civil, Electrical & Mechanical
2	Construction of Services at Extension 13 & JJ Location (Roads, Water, Sewer & Electrical Reticulation) in Ondangwa	Ondangwa Town Council	N\$ 28 Million	24 Month Complete 2013	Civil, Electrical & Mechanical
3	Construction of Services at Ehenye Extension Proper (Roads, Water, Sewer & Electrical Reticulation) in Oshakati. MASS URBAN LAND SERVICING PROJECT	Ministry of Urban & Rural Development & Oshakati Town Council	N\$ 52 Million	18 Month Complete 2015	Civil, Electrical & Mechanical
4	Construction of a Tarred Road (Road 113, 115, 118 and 119) in Oluno area, Ondangwa Town.	Ondangwa Town Council	N\$ 9.1 Million	12 Month Complete 2013	Civil
5	Construction of Services in Omaruru (Roads, Water, Sewer, Electrical Reticulation and design of bore holes control system)	Omaruru Municipality	N\$ 65 Million	24 Month Complete 2015	Civil, Electrical & Mechanical
6	Construction of Services in Usakos (Roads, Water & Sewer Reticulation)	Usakos Town Council	N\$ 25 Million	24 Month Complete 2015	Civil
7	Kuando Kubango Cross-Border Electrification in Angola	ENE (Angolan Power Utility)	N\$ 300 Million	24 Month Complete 2014	Electrical
8	Provision of Services at Nkurenkuru Ext 2 & 3 (Phase 01 & 02)	Nkurenkuru Town Council	N\$ 45 Million	24 Month Complete 2014	Civil, Structural, Electrical & Mechanical
9	Provision of Services at Henties Bay (Omdel Ext. 5) (Phase 01 & 02)	Henties Bay Municipality	N\$ 50 Million	24 Month Complete 2014	Civil, Structural, Electrical & Mechanical
10	Specialist Consultancy Services for a New Waste Water Treatment Plant & For the Upgrade of the Existing Waste Water Treatment Plant in Walvis Bay	Municipality of Walvis Bay	N\$65 Million	24 Month Complete 2015	Civil, Electrical & Mechanical
11	New Truck Parking Facilities and Re-design of the Entry - Exit Junction at OTAVI FOURWAYS TOTAL PETROL STATION	TOTAL Namibia	N\$ 10 Million	12 Month Complete 2014	Civil

SERVICES (ROADS, WATER, SEWER, STORM WATER AND ELECTRICITY)

(PROJECT MANAGEMENT; DETAILED ENGINEERING DESIGN; TENDERING; ADJUDICATION & CONSTRUCTION SUPERVISION)

Completed Projects					
	Project Name	Client	Project Cost	Duration; Stage; Year	Discipline
12	Provision of Municipal Infrastructure Services at Walvis Bay Extension 17, Walvis Bay	Sinco Investments 82 (Pty) Ltd	N\$ 25 Million	12 Month Complete 2017	Civil, Structural, Electrical & Mechanical
13	Provision of Municipal Infrastructure Services at Oranjemund Extension 10, Oranjemund	Oranjemund Town Council	N\$ 20.5 Million	12 Month Complete 2022	Civil, Structural, Electrical & Mechanical
14	Provision of Municipal Infrastructure Services at Baghdad Extension 5 in Oranjemund	Oranjemund Town Council	N\$ 5.0 Million	6 Month Complete 2022	Electrical
15	Provision of Municipal Infrastructure Services at Outapi	Outapi Town Council	N\$ 6.5 Million	09 Month Complete 2012	Electrical & Mechanical
16	Provision of Municipal Infrastructure Services at Mariental	Mariental Municipality	N\$ 4.8 Million	06 Month Complete 2012	Electrical & Mechanical
17	Provision of Municipal Infrastructure Services at Tsumeb	Tsumeb Municipality	N\$ 4.3 Million	06 Month Complete 2012	Electrical & Mechanical
18	Provision of Municipal Infrastructure Services at Omuthiya Industrial Area	Omuthiya Town Council	N\$ 7.6 Million	08 Month Complete 2012	Civil & Structural
19	Construction of Boreholes and Elevated Water Tanks at Calai, Angola	Calai Local Authority, Angola	N\$ 1.5 Million	04 Month Complete 2013	Civil & Structural
20	Construction of Water Tower, Elevated Water Tanks and Pumps at Okongo	Ohangwena Regional Council	N\$ 0.75 Million	03 Month Complete 2013	Civil & Structural
21	Provision of Municipal Infrastructure Services at Eenhana Extension 2 (informal Settlement)	Eenhana Town Council	N\$ 6.8 Million	09 Month Complete 2013	Electrical
22	Rehabilitation of Existing Sewer Lines in Ongenga	Ohangwena Regional Council	N\$ 1.3 Million	06 Month Complete 2013	Civil
23	Design, Installation Supervision and Commissioning of Traffic Lights (Robots) at the T-Junction near Ondangwa Town Council offices in Ondangwa	Ondangwa Town Council	N\$ 258,000.00	03 Month Complete 2013	Electrical
24	Energy Audit at First National Bank, Ongwediva branch in Ongwediva	First National Bank (FNB), Namibia	N\$ 105,000.00	02 Month Complete 2014	Electrical

SERVICES (ROADS, WATER, SEWER, STORM WATER AND ELECTRICITY)

(PROJECT MANAGEMENT; DETAILED ENGINEERING DESIGN; TENDERING; ADJUDICATION & CONSTRUCTION SUPERVISION)

Current Projects					
	Project Name	Client	Project Cost	Duration Stage Year	Discipline
1	New Opuwo Aerodrome (Airport)	Ministry of Works & Transport	N\$ 145 Million	18 Month Tender 2024	Civil, Structural, Electrical & Mechanical
2	Provision of Services at Extension 22 in Ondangwa (PUBLIC PRIVATE PARTNERSHIP)	Ondangwa Town Council and CONSELECT PPP	N\$ 90 Million	24 Months Tender 2022	Civil, Structural, Electrical & Mechanical
3	Provision of Services at Extension 4 in Outjo (PUBLIC PRIVATE PARTNERSHIP)	Outjo Municipality and CONSELECT PPP	N\$ 65 Million	18 Month Tender 2022	Civil, Structural, Electrical & Mechanical
4	Provision of Services at Extension 9 in Otjiwarongo, Industrial plots. (PUBLIC PRIVATE PARTNERSHIP)	Otjiwarongo Municipality and Conselect PPP	N\$ 120 Million	12 Month Construction 2021	Civil, Structural, Electrical & Mechanical
5	Provision of Services at Extension 12 in Henties Bay (PUBLIC PRIVATE PARTNERSHIP)	Henties Bay Municipality and JAJ PPP	N\$ 100 Million	24 Month Tender 2021	Civil, Structural, Electrical & Mechanical
6	Provision of Municipal Infrastructure Services at Walvis Bay Extension 16 in Walvis Bay	Wakuna Investment	N\$ 64 Million	24 Month Construction 2023	Civil, Structural, Electrical & Mechanical
7	Provision of Municipal Infrastructure Services at Kuisebmond Extension 16 in Walvis Bay	P.A.M Tree Investment	N\$ 55 Million	18 Month Tender 2023	Civil, Structural, Electrical & Mechanical
8	Construction of Services in Karibib Ext. 2 (Roads, Water, Sewer & Electrical Reticulation)	Karibib Town Council	N\$ 40 Million	24 Month Tender 2023	Civil, Electrical & Mechanical
9	Design; Tender Documentation; Contract Administration, and Site Supervision of DR 3424 (District Road): Mungunda – Shakambu in the Kavango East Region	Roads Authority	N\$ 85 Million	24 Month Tender 2019	Civil
10	Provision of Services at Okakarara (CBD HEAVY & LIGHT INDUSTRIAL AREAS) (Phase 01 & 02)	Okakarara Town Council	N\$ 35 Million	24 Month Construction 2020	Civil, Structural, Electrical & Mechanical
11	Design; Tender Documentation; Contract Administration, and Site Supervision of TR7/1 (Trunk Road): Karibib – Usakos in the Erongo Region	Roads Authority	N\$343 Million	18 Month Construction 2023	Civil
12	Provision of Services at Rehoboth Ext. 7, 8, PORTION 3/18 & BLOCK E (Phase 01 & 02)	Rehoboth Town Council	N\$ 40 Million	24 Month Construction 2021	Civil, Structural, Electrical & Mechanical
13	Provision of Municipal Infrastructure Services at Narraville Extension 11, Walvis Bay	Municipality of Walvis Bay	N\$ 84.5 Million	36 Month Tender 2022	Civil, Structural, Electrical & Mechanical

COMPLETED PROJECTS

IT, COMMUNICATIONS & ELECTRONIC CONSULTING ENGINEERING

(PROJECT MANAGEMENT; DETAILED ENGINEERING DESIGN; TENDERING; ADJUDICATION & CONSTRUCTION SUPERVISION)

Completed Projects					
	Project Name	Client	Project Cost	Duration Stage Year	Discipline
1	Design & installation of ICT, CCTV & alarm services for the New Eenhana MTI Regional Office	NDC	N\$ 25M	12 months Complete 2015	IT, Communications, Electronics
2	Design & installation of ICT, CCTV & alarm services for the New Outapi MTI Regional Office	NDC	N\$ 12M	12 months Complete 2015	IT, Communications, Electronics
3	Design & Installation of ICT & electronic systems for the New Omega Police Station	Ministry of Safety & Security	N\$ 5M	24 months Complete 2015	IT, Communications, Electronics
4	Design & Installation of ICT & electronic systems for the New Okangwati Police Station	Ministry of Safety & Security	N\$ 5M	24 months Complete 2015	IT, Communications, Electronics
5	Design & Installation of ICT & electronic systems for the Israel Patrick Iyambo Training College in Windhoek	Ministry of Safety & Security	N\$ 5.5M	6 months Complete 2015	IT, Communications, Electronics
6	Design & Installation of ICT & electronic systems for the New Botanical Research Institute in Windhoek	Ministry of Agriculture	N\$ 16M	24 months Complete 2015	IT, Communications, Electronics
7	Design & Installation of ICT & Electronic systems for the New National Parliament of Namibia	National Assembly	N\$ 60.5M	48 months Complete 2016	IT, Communications, Electronics
8	Design & Installation of ICT & Electronic systems for the New Electoral Commission of Namibia Building	Electoral Commission of Namibia	N\$ 3M	24 months Complete 2016	IT, Communications, Electronics
9	Design & Installation of ICT & Electronic systems for the New Nepara Police Training College	Ministry of Safety & Security	N\$ 25M	24 months Complete 2016	IT, Communications, Electronics
10	Information Technology (IT) Specialist Services for Police Capital Projects	Ministry of Works & Transport (Department of Works)	N\$ 270M	12 Month Complete 2016	Electrical
11	Information & Communication Technology (ICT) Specialist Services at Windhoek's Patrick Iyambo Police Training College	Ministry of Safety & Security	N\$ 5.5M	12 Month Complete 2016	Electrical

COMPLETED & CURRENT PROJECTS

BUILDING SERVICES

(PROJECT MANAGEMENT; DETAILED ENGINEERING DESIGN; TENDERING; ADJUDICATION & CONSTRUCTION SUPERVISION)

Completed Projects					
	Project Name	Client	Project Cost	Duration Stage Year	Discipline
1	Construction of Ongenga Business Estate (Phase 1 & 2); Eenhana Business Node; Ministry of Trade & Industry Ohangwena Regional Office, Eenhana & Onayena Community Market	Namibia Development Corporation (NDC)	N\$ 65 Million	24 Month Complete 2013	Electrical & Mechanical
2	New Regional Office Construction for the Ministry of Information & Communication Technology (MICT) in Omusati Region	Ministry of Works & Transport (Department of Works)	N\$ 16.1 Million	24 Month Complete 2014	Electrical
3	Construction of New Okangwati Police Station & New Omega Police Station in Kunene & Kavango Regions respectively	Ministry of Works & Transport (Department of Works)	N\$ 110 Million	24 Month Complete 2014	Electrical & Mechanical
4	Construction of Office Blocks, Staff Accommodation, Storage Facilities & Canopies at Veterinary Control Points (Mururani, Nama-Pan, Palmfontein & Khamdescha) respectively	Ministry of Agriculture, Water & Forestry (Directorates of Veterinary Services)	N\$ 92.5 Million	24 Month Complete 2014	Civil, Structural, Electrical & Mechanical
5	MCA Schools Upgrade in Oshikoto and Kavango Regions. "Construction Supervision and Contract Administration"	Millenium Challenge Account (MCA) Omugongo Joint Venture	N\$ 92 Million	18 Month Complete 2014	Civil, Structural, Electrical & Mechanical
6	Construction of Police Accommodation in Kavango West Region	Ministry of Safety & Security	N\$ 25 Million	12 Month Complete 2014	Electrical & Mechanical
7	Construction of SME Bank branches at Lafrenze Shopping Mall – Windhoek, Oshana Shopping Mall – Ongwediva & Galaxy Shopping Mall - Rundu	SME BANK	N\$ 65 Million	12 Month Complete 2014	Structural, Electrical & Mechanical
8	Construction of Ondangwa Trade Fair Sheds (Phase 1 & 2)	Ondangwa Town Council	N\$ 28.7 Million	12 Month Complete 2016	Structural, Electrical & Mechanical
9	Demolishing and Re-Building of The Official Residence in Pretoria (Purchase of Diplomatic Premises Abroad) PRETORIA, REPUBLIC OF SOUTH AFRICA.	Ministry of Works & Transport (Ministry of International Relations & Cooperation)	N\$ 150 Million	12 Month Complete 2022	Electrical & Mechanical
Current Projects					
1	Construction of the NDC OTJIWARONGO INDUSTRIAL PARK	Namibia Development Corporation (NDC)	N\$ 185 Million	24 Month Tender 2015	Electrical & Mechanical
2	Construction of the Ministry of Industrialization, Trade and SME Development Regional Office in Gobabis	Namibia Development Corporation (NDC)	N\$ 310 Million	24 Month Tender 2015	Electrical & Mechanical

BUILDING SERVICES

(PROJECT MANAGEMENT; DETAILED ENGINEERING DESIGN; TENDERING; ADJUDICATION & CONSTRUCTION SUPERVISION)

Current Projects					
	Project Name	Client	Project Cost	Duration Stage Year	Discipline
3	Construction of Anti-Poaching Stations in Etosha National Park	Ministry of Environment & Tourism	N\$ 195 Million	12 Month Tender 2016	Electrical & Mechanical
4	Construction of Office Blocks, Staff Accommodation, Storage Facilities & Canopies at Veterinary Control Points (Rooidag, Werda, Oshivelo & Tsintsabis) respectively	Ministry of Agriculture, Water & Forestry (Directorates of Veterinary Services)	N\$ 85 Million	48 Month Construction 2016	Civil, Structural, Electrical & Mechanical
5	Construction of Ondangwa Remand Correctional Facility (Prison)	Ministry of Works & Transport (Department of Works)	N\$ 470 Million	24 Month "Feasibility Study and Preliminary Designs Complete" 2016	Civil/ Structural
6	Construction of National Botanical Research Institute in Windhoek (Phase 01 & 02).	Ministry of Works & Transport (Department of Works)	N\$ 90 Million	24 Month Design 2022	Electrical & Mechanical
7	Construction of the New Head Quarters for the Ministry of Veterans Affairs (MoVA)	Ministry of Works & Transport (Department of Works)	N\$ 370 Million	24 Month Tender 2014	Civil & Structural
8	Development of a Master Plan for the Construction of a New Nkurenkuru District Hospital in Kavango West Region	Ministry of Health & Social Services	N\$ 350 Million	24 Month "Master Plan Complete" 2014	Civil & Structural
9	Presidential Waterfront Development at Dolphin Beach, Walvis Bay	Flowwin Consortium Namibia	N\$ 800 Million	12 Month "Feasibility Study and Preliminary Designs Complete" 2014	Civil, Structural, Electrical & Mechanical
10	Construction of Namibia International Convention Centre, Windhoek	Ministry of Works & Transport	N\$2.2 Billion	60 Months Tender 2017	Electrical & Mechanical
11	Bulk Fuel Storage Facility – Gobabis	NAMCOR	N\$110 Million	18 Months Tender 2022	Civil/Structural, Electrical & Mechanical
12	Construction of the New Parliament Building in Windhoek	Ministry of Works & Transport (Department of Works)	N\$ 2 Billion	48 Month "Design Complete" 2015	Electrical & Mechanical
13	Construction of the New Kavango West Regional Management Team Offices (RMT) for Ministry of Health and Social Services (MOHSS) in the Kavango West Region	Ministry of Health & Social Services	N\$ 278 Million	24 Month "Design Complete" 2015	Civil/ Structural

BUILDING SERVICES

(PROJECT MANAGEMENT; DETAILED ENGINEERING DESIGN; TENDERING; ADJUDICATION & CONSTRUCTION SUPERVISION)

Current Projects					
	Project Name	Client	Project Cost	Duration Stage Year	Discipline
14	Construction of the B2 INDUSTRIAL PARK IN OTAVI	Namibia Development Corporation (NDC)	N\$ 97 Million	24 Month "Design Complete" 2015	Electrical & Mechanical

COMPLETED & CURRENT PROJECTS SURVEYING

(PROJECT MANAGEMENT; DETAILED ENGINEERING DESIGN; TENDERING; ADJUDICATION & CONSTRUCTION SUPERVISION)

Completed Projects					
	Project Name	Client	Stage Year	Duration	Discipline
1	Construction of Ondangwa Extension 13 Services (water, sewer, roads and electricity). "Quality Control/ Monitoring the Construction"	Ondangwa Town Council	Complete 2013	03 Month	Surveying
2	Construction of Omuthiya Extension 4, Industrial Area Services (roads works and storm water). "Quality Control/ Design Review of the Surveys"	Omuthiya Town Council	Complete 2013	01 Month	Surveying
3	Construction of Oluno Remand Prison, Ondangwa. "Quality Control/ Design Review of the Surveys"	Ministry of Works & Transport (Department of Works)	Complete 2013	01 Month	Surveying
4	Construction of JJ Location Services (water, sewer and gravel roads) and Construction of a Tarred Road in Oluno, Ondangwa. "Quality Control/ Design Review of the Surveys"	Ondangwa Town Council	Complete 2013	01 Month	Surveying
5	Storm Water Drainage at Erf 1137 Oshakati, Mrs. M. Shitula residence. "Designing Platform for Drainage purposes/ Calculating Material required for Earthworks"	Mrs. M. Shitula	Complete 2013	01 Month	Surveying
6	Construction of Ministry of Labour Offices, Ondangwa. "Sewer Line Route Survey"	Ongwediva Consulting Engineers (OCE)	Complete 2013	01 Week	Surveying
7	Construction of Steel Water Tower, Ongwediva. "Water Pipeline Route Survey"	Ongwediva Consulting Engineers (OCE)	Complete 2013	01 Week	Surveying

SURVEYING

(PROJECT MANAGEMENT; DETAILED ENGINEERING DESIGN; TENDERING; ADJUDICATION & CONSTRUCTION SUPERVISION)

Completed Projects					
	Project Name	Client	Stage Year	Duration	Discipline
8	Construction of ABC Open Market, Ondangwa. "Topographic Survey"	Ongwediva Consulting Engineers (OCE)	Complete 2013	01 Week	Surveying
9	Construction of Prefab Accommodation at Rundu Hospital. "Topographic Survey"	LI Architects	Complete 2013	01 Week	Surveying
10	Construction of Prefab Accommodation at Katima Mulilo Hospital. "Topographic Survey"	LI Architects	Complete 2013	01 Week	Surveying
11	Construction of Department of Works Regional office at Helao Nafidi. "Topographic Survey"	One Stop Engineering Consulting (OSEC)	Complete 2014	02 Days	Surveying
12	Construction of Department of Works Regional office at Okongo. "Topographic Survey"	One Stop Engineering Consulting (OSEC)	Complete 2014	02 Days	Surveying
13	Construction of Department of Works Regional office at Oshikuku. "Topographic Survey"	One Stop Engineering Consulting (OSEC)	Complete 2014	02 Days	Surveying
14	Construction of Department of Works Regional office at Okangwati. "Topographic Survey"	One Stop Engineering Consulting (OSEC)	Complete 2014	02 Days	Surveying
15	Upgrading of Oshakati – Okahao Main Road (2.2 km). "Topographic Survey"	Ongwediva Consulting Engineers	Complete 2014	01 Week	Surveying
16	Construction of Omuthiya Clinic. "Topographic Survey"	Ongwediva Consulting Engineers	Complete 2014	02 Days	Surveying
17	Upgrading of Oshakati – Ompundja Road and Ondangwa – Prison Road. "Topographic Survey"	Ongwediva Consulting Engineers	Complete 2014	02 Weeks	Surveying
18	Construction of Odimbwa Clinic. "Topographic Survey"	Carlo Sprengel Architect	Complete 2014	02 Days	Surveying
19	Construction of Onamulenge Open Market, Outapi. "Topographic Survey"	Ongwediva Consulting Engineers	Complete 2014	02 Days	Surveying
20	Construction of the Ongwediva Trade Fair Entrance Gate for Standard Bank. "Topographic Survey"	AIJ Project Cost Consultants	Complete 2014	02 Days	Surveying

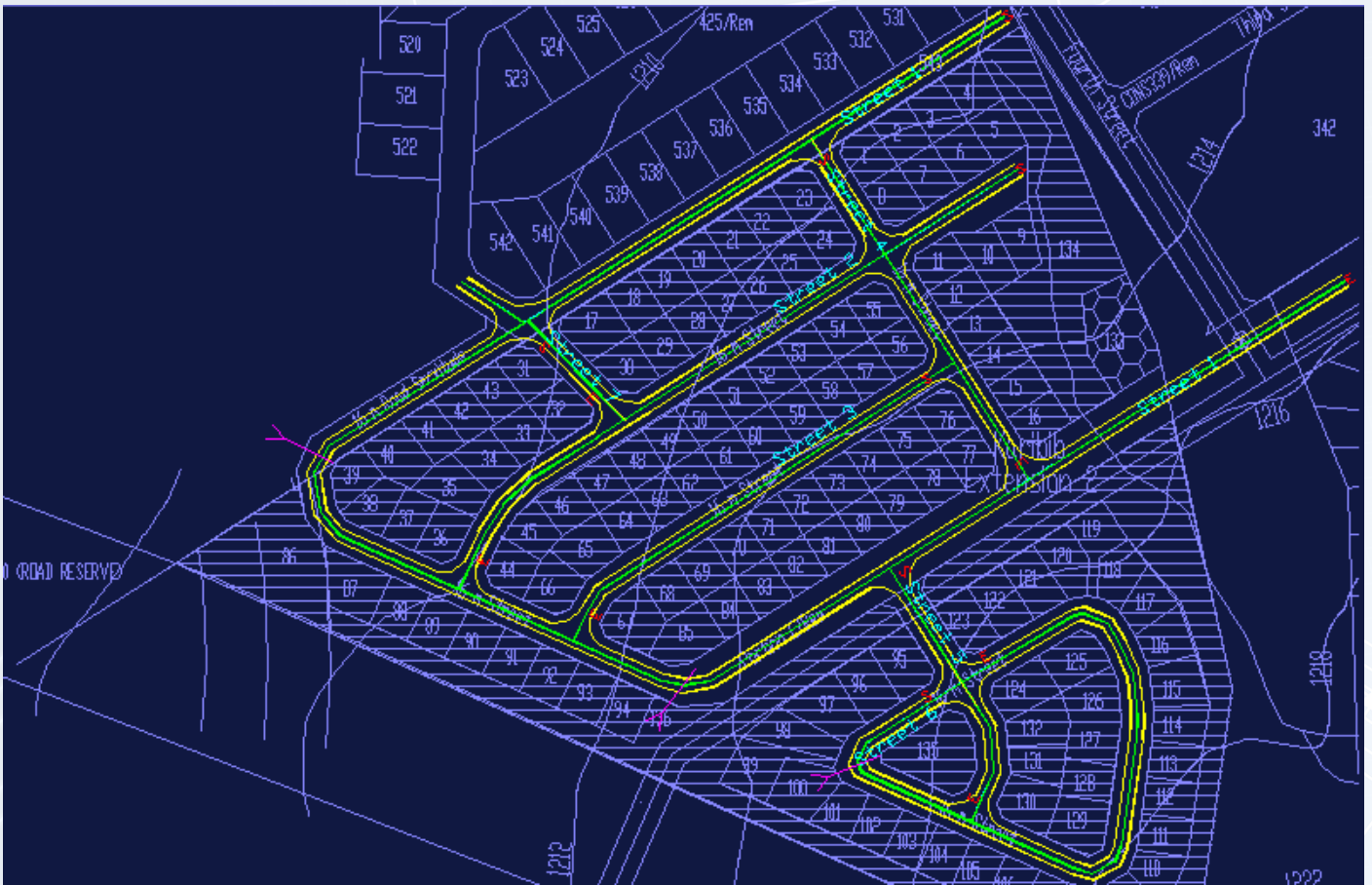


FIGURE 09: DESIGN OF SERVICES, KARIBIB EXT 2



FIGURE 10: KUISEBMOND PRIMARY SCHOOL, WALVIS BAY

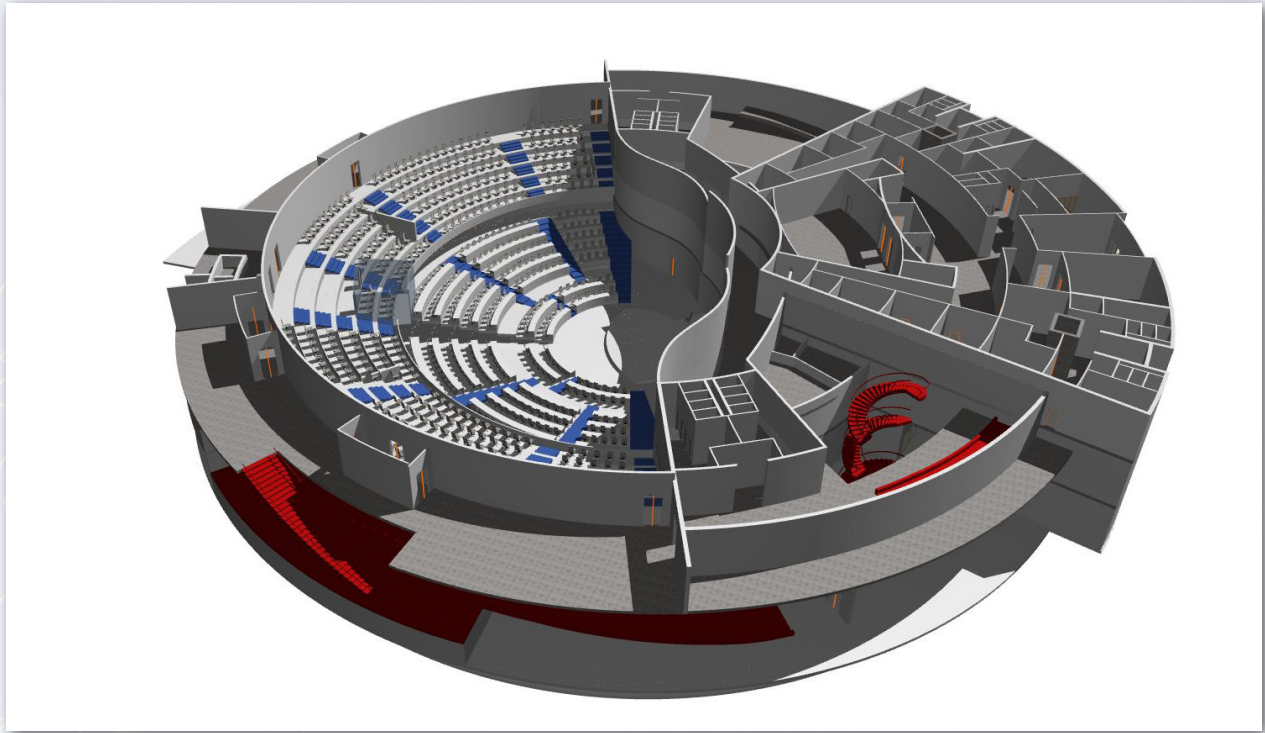


FIGURE 11: NEW PARLIAMENT CHAMBERS, WINDHOEK

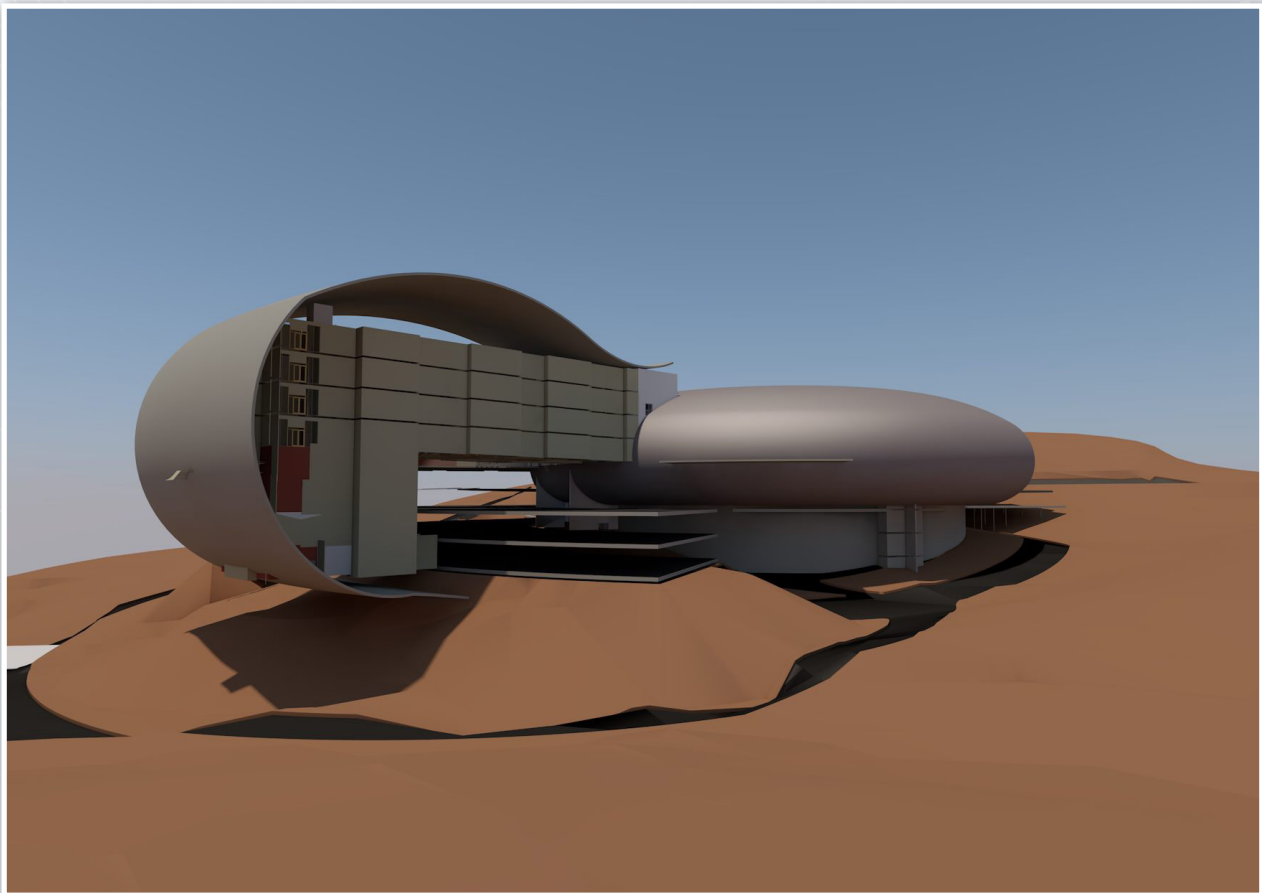


FIGURE 12: NEW NATIONAL PARLIAMENT BUILDING OF NAMIBIA



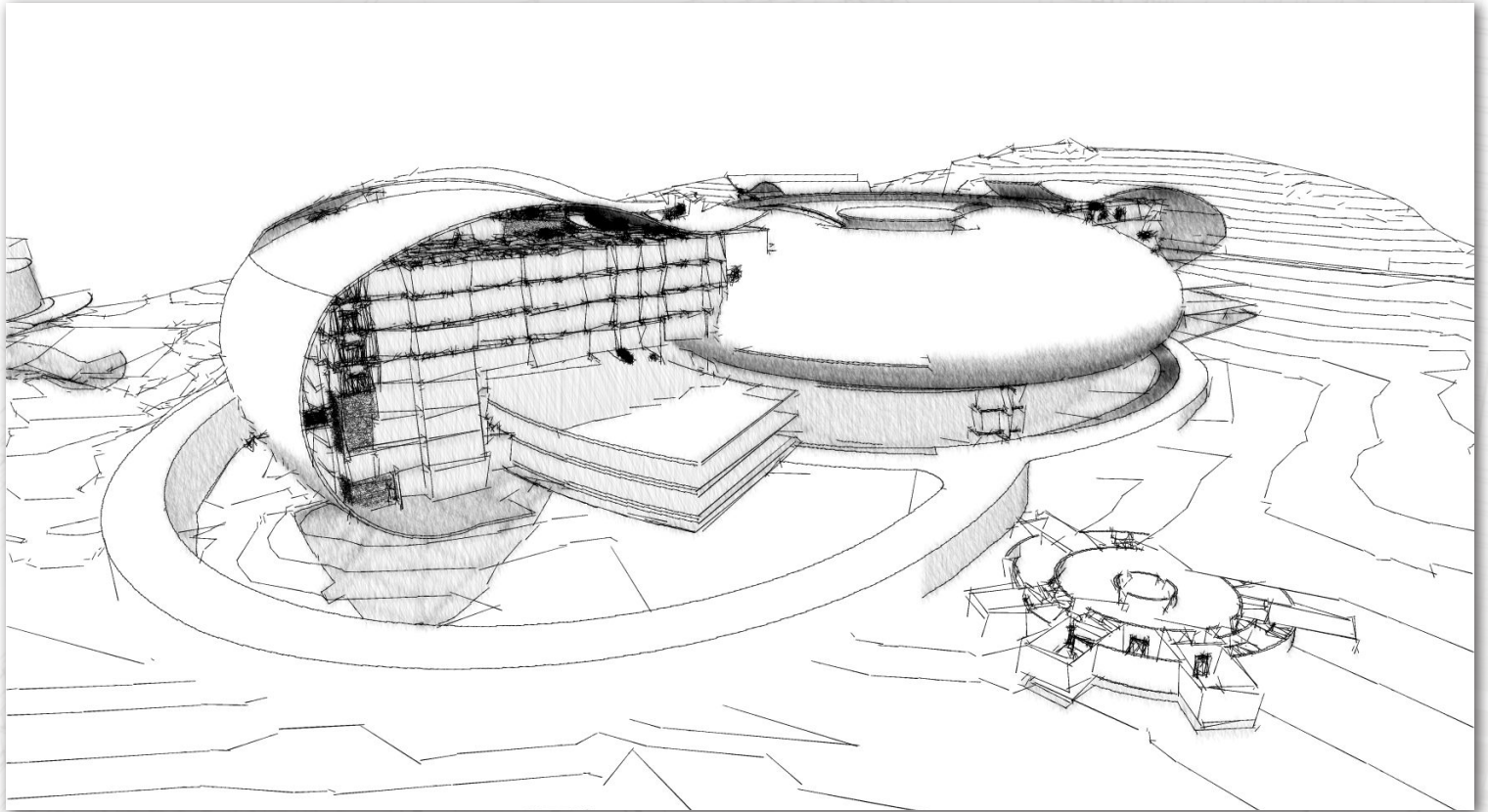
Contact Details

Wiseman Molatzi
Managing Director
Mobile: +264 811 280 260
Website: www.conselect.com.na
Email: wiseman@conselect.com.na
Email: wisemanmolatzi74@gmail.com



Conselect Consulting Engineers

Consulting Engineers
&
Project Managers



New National Parliament Building of Namibia

Walvis Bay Office:

Erf 5575, Pumla Court, Unit 5
Cnr. Makalani Crescent & Ebony Street
Independence Beach
Walvis Bay, Namibia
Tel: +264 64 200 336
Mobile: +264 811 280 260

Company Reg.: CC/2023/07689
VAT Reg. No: 14239775-01-5
Website: www.conselect.com.na
Email: wiseman@conselect.com.na
Email: wisemanmolatzi74@gmail.com
P.O. Box 5076, Walvis Bay, Namibia